

Manual 3/5/7KW chiller / heater

WARNING

The chiller/heater is connected to 220v.

Despite the fact that the chiller/ heater has been found to be safe, we would like to warn you once again about the dangers of water and electronics.

Do not touch or operate with wet hands or when you are in the water.

INSTALLATION

- Make sure the machine is on a straight floor.
- Make sure that the machine is not in a damp room.
- Make sure that the machine (if it is outside) is in the shade with very hot weather.
- If you install the machine, make sure there is sufficient ventilation otherwise the machine will not be able to lose it's heat.
- use teflon where necessary
- install the filter pump as requested in the manual in the box.

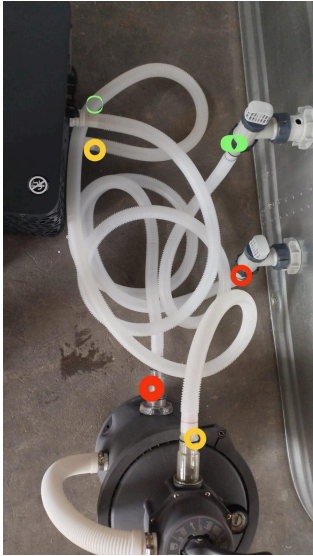
CONNECTIONS



This is picture from the inside of the tank. Make sure the inlet with the raster is the lowest and the inlet with the hole is positioned the highest



This is a picture from the outside of the tank. Both inlets with the valves connected, ready to connect the hoses with clamps.



Connect the lowest inlet on the tank (red) with the lowest inlet on the filter pump (red). Use the clamps to tighten.

Connect the highest inlet on the filter pump (yellow) with lowest inlet on the chiller/heater (yellow). Use the clamps to tighten.

Connect the highest inlet on the chiller/heater (green) with the highest inlet on the tank (green). Use the clamps to tighten.

When you finished everything and when you tightened all the rings around the hoses, switch the valve on the filter pump to 'filtration' and open the valves on your pool (connected on the inlets).

- Check if there are any leaks.**
- Start the filter pump and look if the water is circulating in the pool.**
- Start the heater.**
- Never run the heater without the filter pump!**
- Read the manual from the heater/chiller how to connect the machine to the app and how to turn and use the different functions. (make sure the filter pump is always working when using heater/chiller)**

Have a nice day